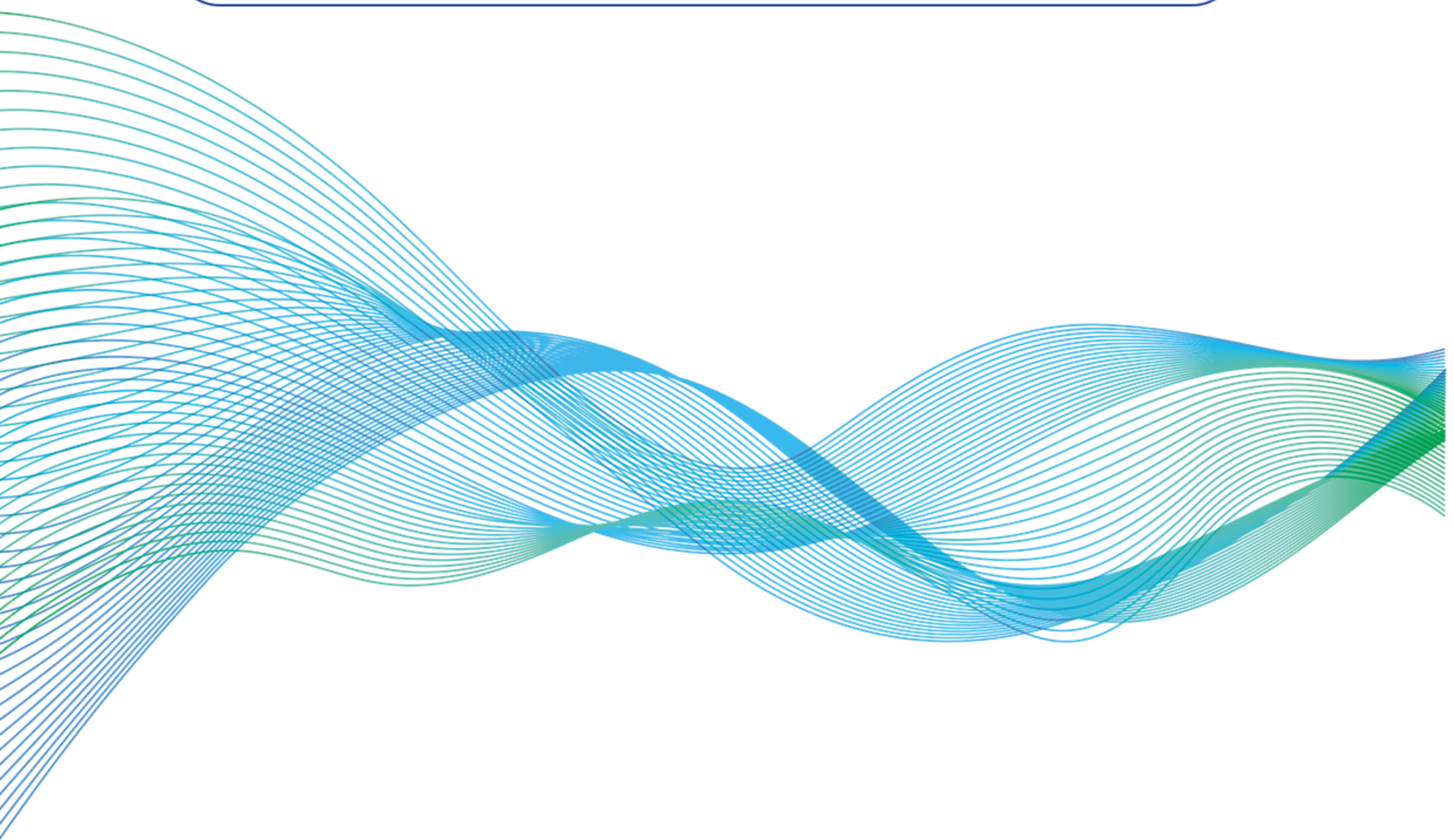


# NVR4.0

# User Manual

---

High-Definition Network Video Recorder



Thank you for purchasing our product. If you have any question or need, please contact us.

The Manual will be updated and is subject to change, without further notice, due to firmware updates or other reasons. Please refer to the latest version of our manual to get updated information. This manual is for guidance purposes only. The provided photos, graphics, and charts hereinafter are only used for explanatory and illustrative purposes and may differ from the actual product. For further details, please refer to the actual product.

Please use this Manual with the guidance and assistance of professionals trained in supporting the Product.

## Applicable Model:

This manual is applicable to the following models:

Product Series	TS8232Cx
	TS81xxD3x
	TS8x64G
	TS8x36Mx

# Contents

<b>Chapter 1 Overview</b>	<b>1</b>
1.1 Product Introduction	1
1.2 Product Configuration	1
1.3 Product Specification	2
1.4 Safety Instruction	2
1.5 Hard Disk Installation	3
1.6 Connecting Diagram	4
<b>Chapter 2 Startup</b>	<b>5</b>
2.1 Activate the NVR	5
2.1.1 Setting Login Password & Linking Mobile App (with monitor)	5
2.1.2 Setting Login Password & Linking Mobile App (Without monitor)	7
2.2 Video management	8
2.2.1 Add IPC Automatically	8
2.2.2 IPC management	9
2.3 Video Recording management	10
2.3.1 Setting	10
2.3.2 Playback	11
2.3.3 Backup	12
2.4 Intelligent Analysis – human body detection/vehicle detection & license plate recognition	13
2.4.1 Regional invasion /Cross-border detection setting	13
<b>Chapter 3 Appendix</b>	<b>13</b>
3.1 FAQs	13

# Chapter 1 Overview

## 1.1 Product Introduction

The NVR4.0 high-definition network video recorder is the latest professional monitoring storage device of our company. Equipped with the latest video processing chip, it provides users with high-definition output through excellent video encoding and decoding algorithms.

The NVR4.0 series, featuring stable output, foolproof installation, marvelous speed, and intelligent system, adopts H.264, H.265, H.265+ compression algorithms. It is compatible with ultra-low bit rate and ultra-long network cable camera access, and it has an embedded Linux real-time operating system that agrees with ONVIF protocol. It is competent to conduct automatic search, automatic preview, and automatic recording of IPC at the same time with zero debugging. The APP enables users to obtain image fast, offering a faster and more satisfactory experience.

## 1.2 Product Configuration

Index	Name	Quantity	Unit
1	HD Network Video Recorder	1	pc
2	User Manual	1	pc
3	Mouse	1	pc
4	Power Adaptor	1	pc
5	hard disk drive SATA Cable	1▲	pc
6	hard disk drive Power Cable	1▲	pc
7	hard disk drive Fastening Screws	multiple	set

▲ Note: The external power adapter matches the same number of hard disk drive power cables according to the number of hard disk drives, while the internal power adapter does not come with hard disk drive power cables.

## 1.3 Product Specification

Type	Preview		Playback	Output Resolution	Buzzer	Two way audio
TS8232C6	1 Screen: 1*4K 2 Screen: 2*5MP 4 Screen: 4*3MP 8 Screen: 1*5MP+7*D1	9 Screen: 9*D1 16 Screen: 16*D1 32 Screen: 32*D1	4*3MP/2*5MP	4K	Yes	Yes
TS8108D35	1 Screen: 1*4K 4 Screen: 4*500w	10 Screen: 10*D1	2*4K/4*5MP	4K	No	Yes
TS8116D35	1 Screen: 1*5MP 2 Screen: 2*5MP 4 Screen: 4*500w	9 Screen: 9*D1 16 Screen: 16*D1	4*5MP	4K	Yes	Yes
TS8864G	1 Screen: 1*4K 4 Screen: 4*4K 9 Screen: 9*5MP	16 Screen: 16*2MP 36 Screen: 36*D1 64 Screen: 64*D1	4*4K/9*5MP	4K	Yes	Yes
TS8436M2	1 Screen: 1*4K 2 Screen: 2*5MP 4 Screen: 4*4MP	9 Screen: 9*D1 16 Screen: 16*D1 36 Screen: 36*D1	1*4K/4*5MP	4K	Yes	Yes

## 1.4 Safety Instruction

**Before connecting and operating the device, please be advised of the following tips:**

- The device is designed for indoor use only. Install it in a well-ventilated, dust-free environment and avoid humid, high temperature or strong magnetic condition.
- Use only SATA surveillance hard disk purchased from the official channel.
- Use only power supplies listed in the use manual or user instruction. Ensure correct wiring of the terminals for connection to an AC mains supply within the working voltage range of the power supply. The equipment must be connected to an earthed mains socket-outlet. In the use of the product, you must be in strict compliance with the electrical safety regulations of the nation and region.
- Do not the power off during NVR is still running. User can simply shut it down through the software and then power off to prevent any damage to the hard disk drive.

## 1.5 Hard Disk Installation

**Disconnect the power supply before installation !**

1. Unscrew the screws on back side of the NVR and remove the upper plate.



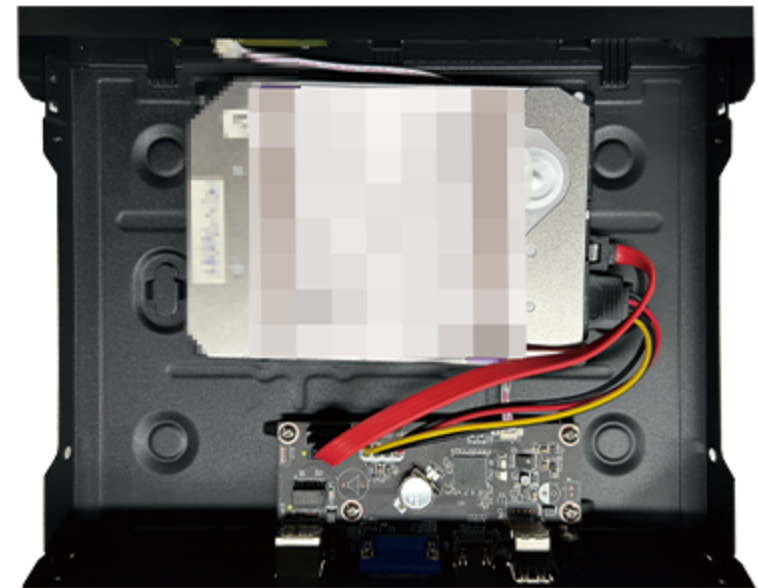
Setp 1

2. Align the screw holes on the hard disk drive with the screws on the bottom of NVR and secure them one by one.



Setp 2

3. Connect the hard disk drive data cable and the hard disk drive power cable to the NVR motherboard, and the other end to the hard disk drive.



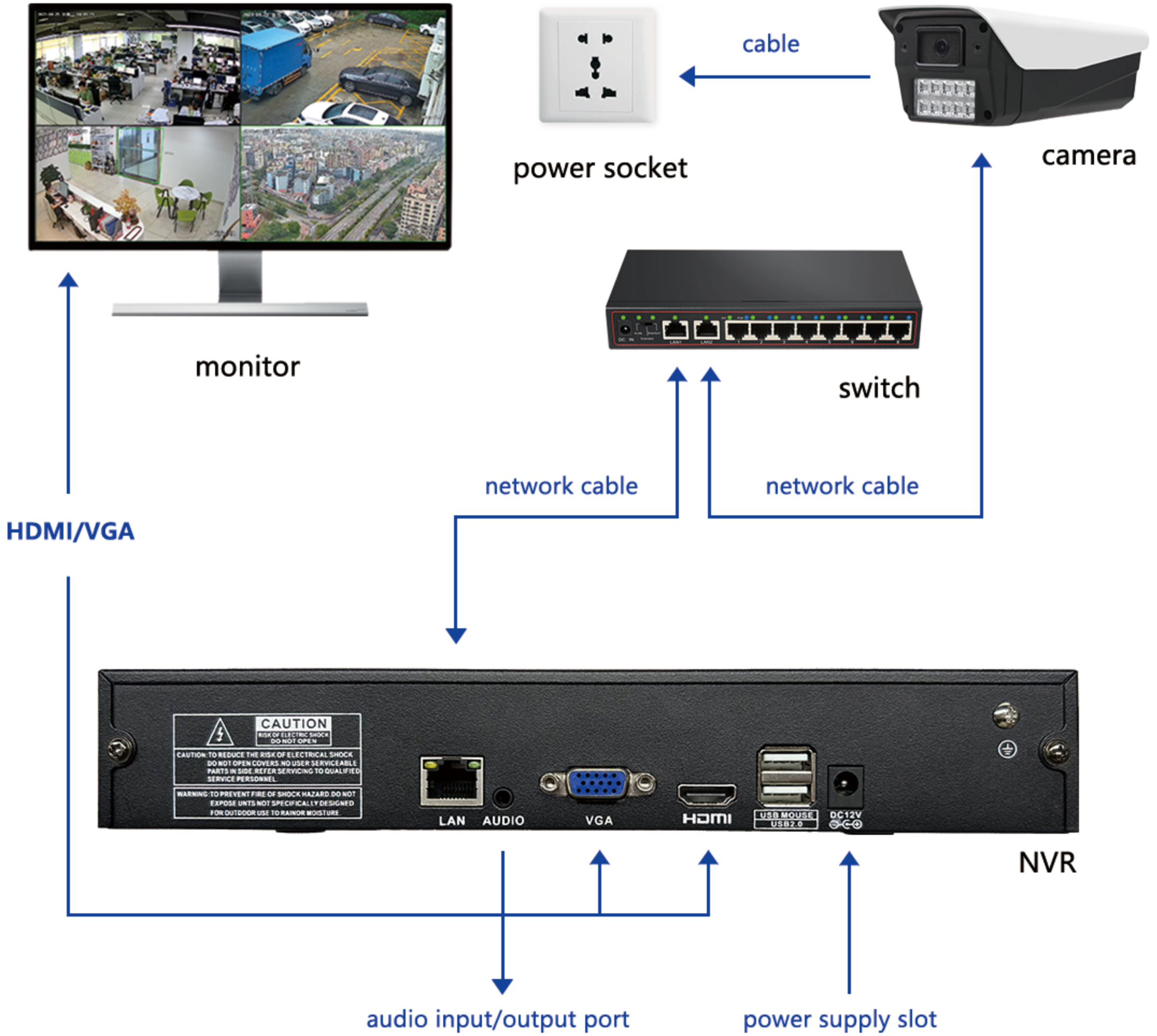
Setp 3

4. Put the NVR with the upper plate back and secure it with screws.



Setp 4

# 1.6 Connecting Diagram



## Chapter 2 Startup

### 2.1 Activate the NVR

Connect the NVR to the network and power supply, turn it on. The "Boot Wizard" interface will display on the screen. User need to complete 1-7 step to active the NVR,after the activation, NVR will be online.

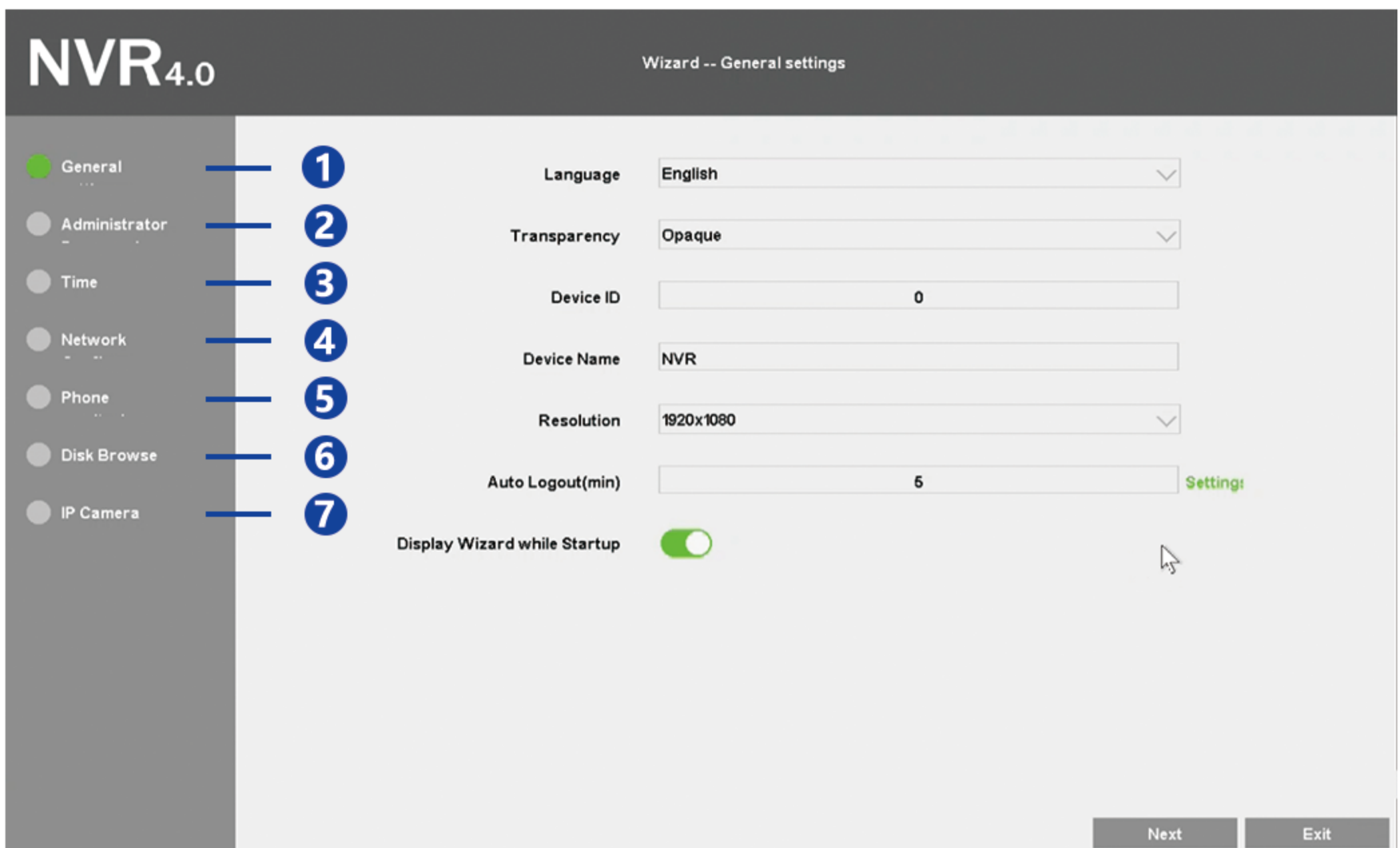


Figure 2.1 Wizard - General settings

#### 2.1.1 Setting Login Password & Linking Mobile App (with monitor)

After the NVR is activated, default password can not log in to the cloud service, user need to modify the password. There are two ways to modify, please reference the below figure :

1. Modify the password of administrator password on the Wizard interface.
2. Click Inactivated on the top of center, set up the new password on the pop-up frame. After successfully log in and connect it to the network, the status will be change from " Inactivated" by "online".

**Attention: Password need to use a minimum of 8 characters, including at least two of the following categories: upper case letters, lower case letters, numbers.**

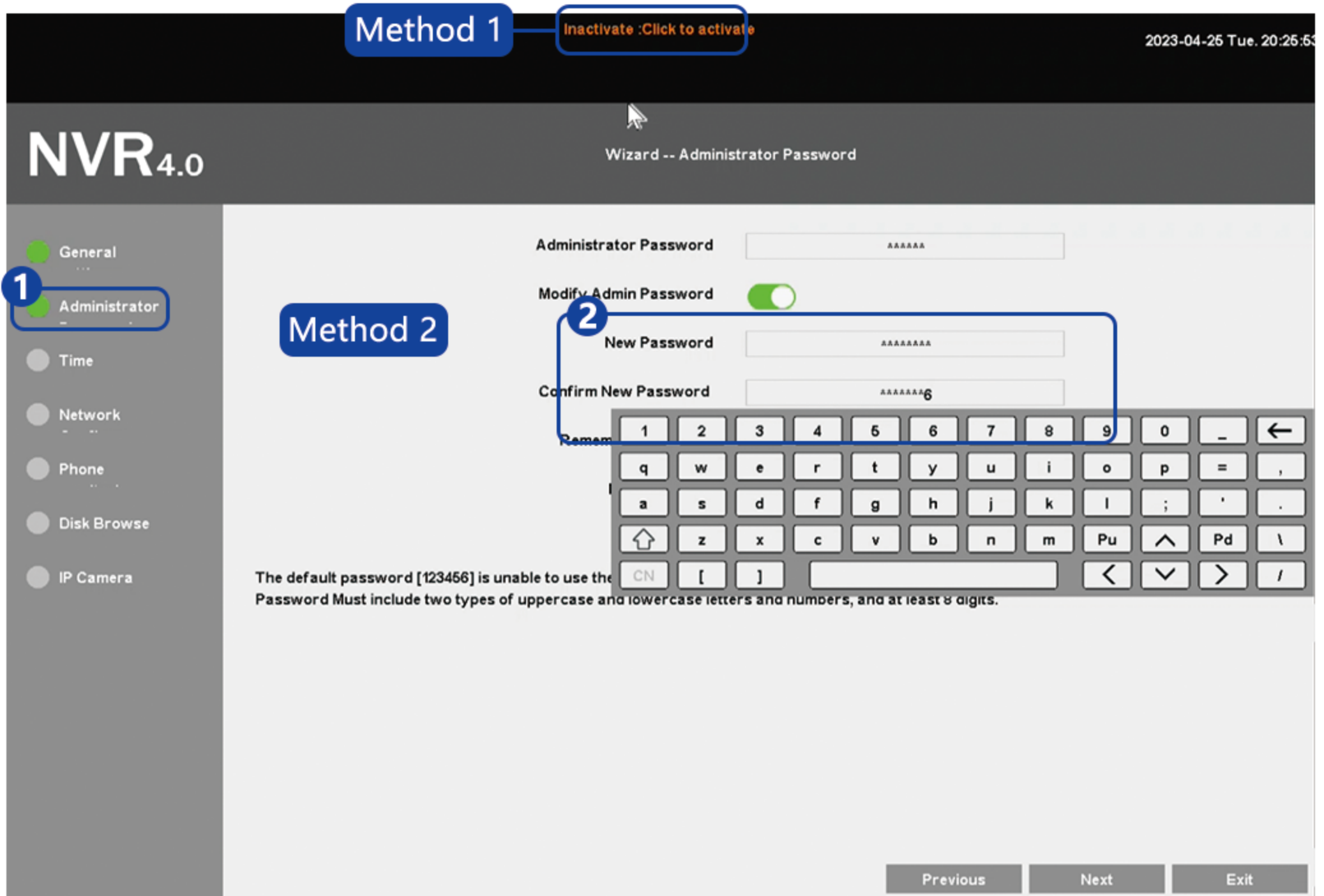


Figure 2.1.1 Modify the password

After the NVR is Online, move the mouse to the top center of the screen, and a QR code will pop out. Turn on the Seetong APP on the mobile phone to scan the QR code to add NVR.



Figure 2.1.1 "Online" Status bar

## 2.1.2 Setting Login Password & Linking Mobile App (Without monitor)

Make sure the NVR is online, use the latest Seetong App, scan the QR code on NVR4.0 to add the NVR on the APP. User can manually set up a new password for NVR4.0 at the first adding.

**Attention: ( NVR and the mobile phone must be in the same LAN.)**

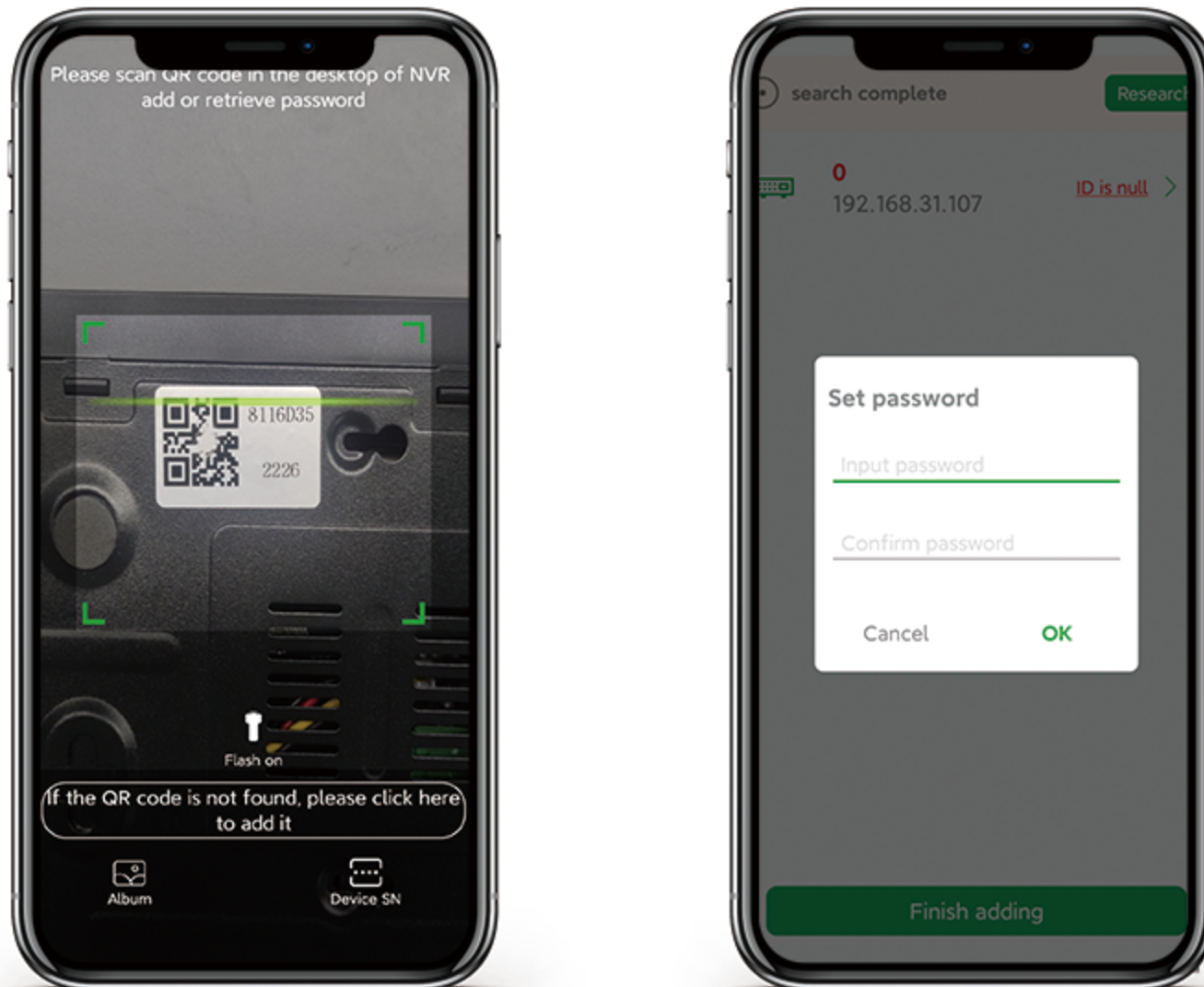


Figure 2.1.2 Setting login password

## 2.2 IPC management

The video management interface is mainly used to add, delete, modify and upgrade IPC on the NVR.

### 2.2.1 Add IPC Automatically

When both of the IPC and NVR are online, click "search device", then "add device", the IPCs which are in the same segment with NVR will be Automatically added. Details information like IP address, protocol, channel name will be display.

The screenshot shows the NVR4.0 interface with a sidebar on the left containing the following menu items: Search device, Modify IP, Batch Modify, Add Device, Delete, Edit, NVR Network Sett, Modify the chann, Batch upgrade IP, and Network detectio. The main area is divided into two sections: 'Searched devices' and 'Added devices'.

The 'Searched devices' section has a search time of 10 seconds and an 'AddMode' set to 'Auto'. It contains an empty table with the following headers: IP, Protocol, Channel Name, File System Version, and Nr of conned Status.

The 'Added devices' section shows a table with the following data:

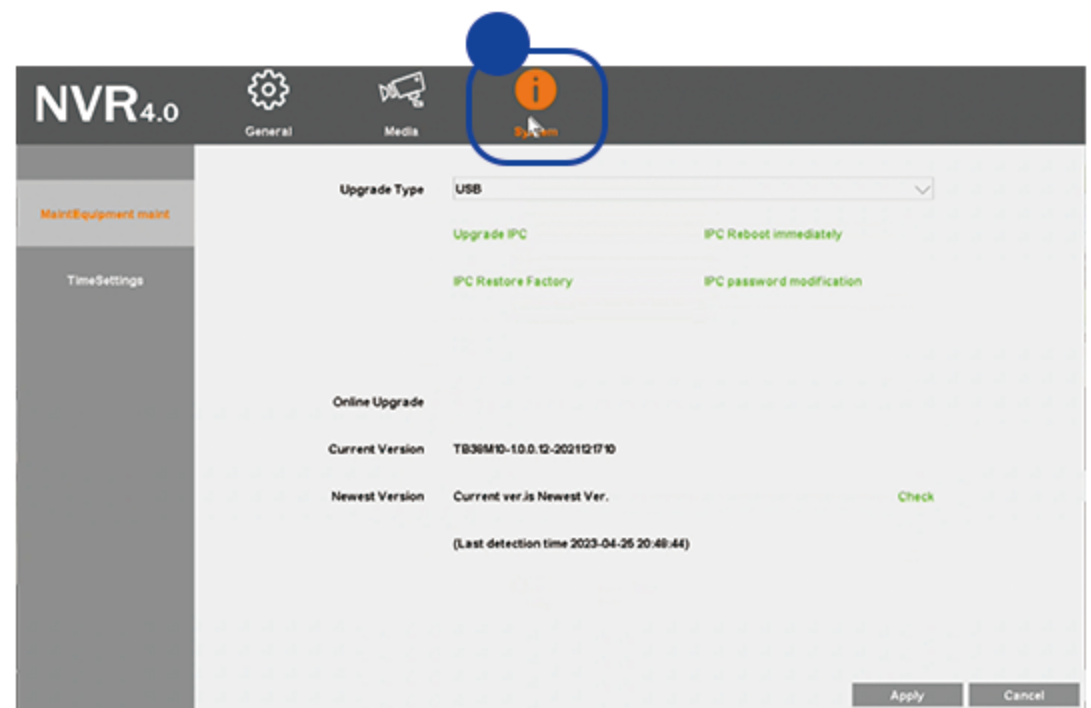
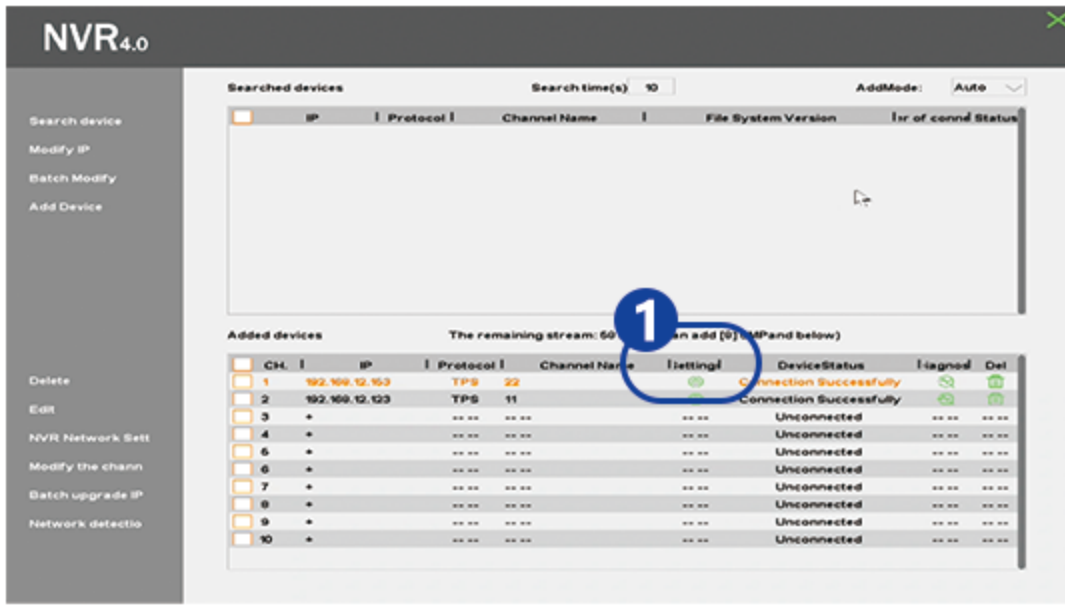
CH.	IP	Protocol	Channel Name	Setting	DeviceStatus	Diagnos	Del
1	192.168.12.153	TPS	22		Connection Successfully		
2	192.168.12.123	TPS	11		Connection Successfully		
3	+	---	---	---	Unconnected	---	---
4	+	---	---	---	Unconnected	---	---
5	+	---	---	---	Unconnected	---	---
6	+	---	---	---	Unconnected	---	---
7	+	---	---	---	Unconnected	---	---
8	+	---	---	---	Unconnected	---	---
9	+	---	---	---	Unconnected	---	---
10	+	---	---	---	Unconnected	---	---

The remaining stream is 58 M (You can add [8] 5MP and below).

Information like IP, protocol, channel number, and version will be displayed, and IPCs on the same network segment with your video recorder will be added to the list automatically.

## 2.2.2 IPC management

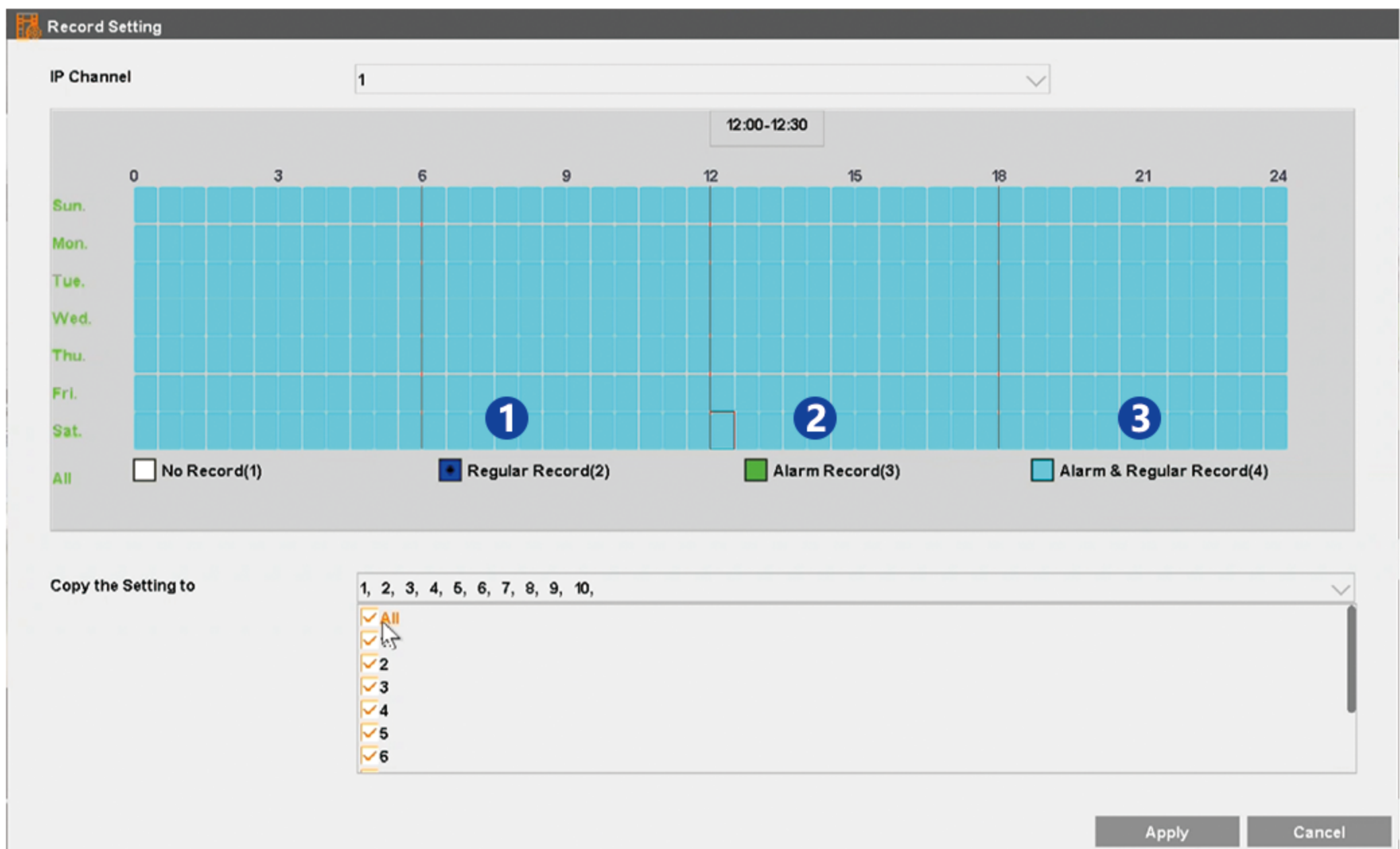
Click the "  " to review the IPC information and and configuration setting.



## 2.3 Video Recording management

### 2.3.1 Setting

On the NVR main interface, click the mouse right key, then choose Record Setting to set the record mode for each channel. (Default mode: Alarm recording & regular Recording )



**1.Regular Record:** save the recordings in the selected time range, no distinguish between alarm and regular recording

**2.Alarm Record:** save the recordings that captured human, vehicles, and moving objects.

**3.Alarm & Regular Record (default mode):** save the recordings in the selected time range with distinguish the 'alarm' and 'regular' by colors.

## 2.3.2 Playback

Click Menu → Playback to review the video of the selected channel.

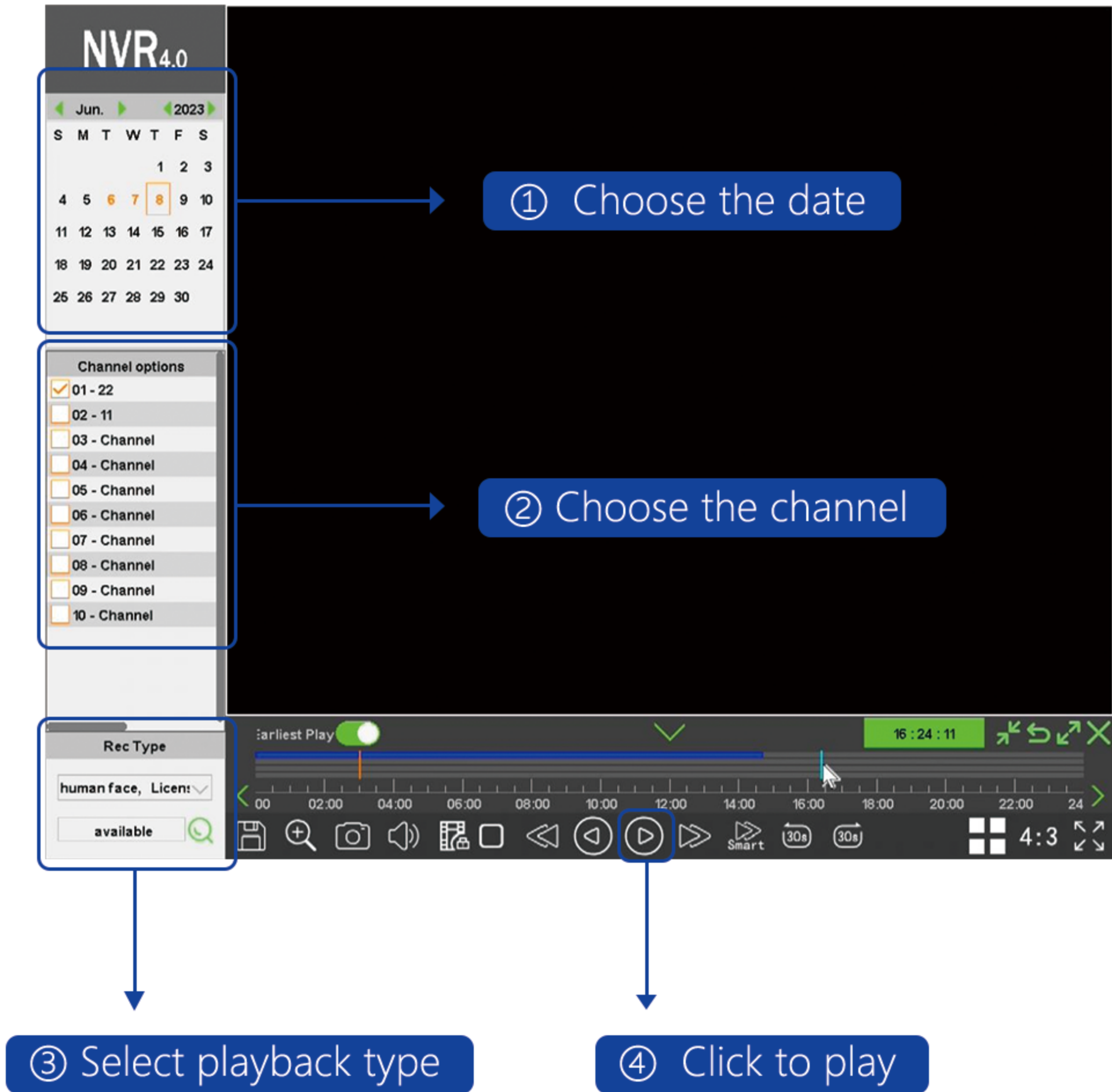


Figure 2.3.2 On-Screen Display

### 2.3.3 Backup

Insert the USB flash disk into the NVR's USB port, on the screen will pop-out the below interface. Click backup to enter to the video backup interface. For details, please reference to the instructions below.

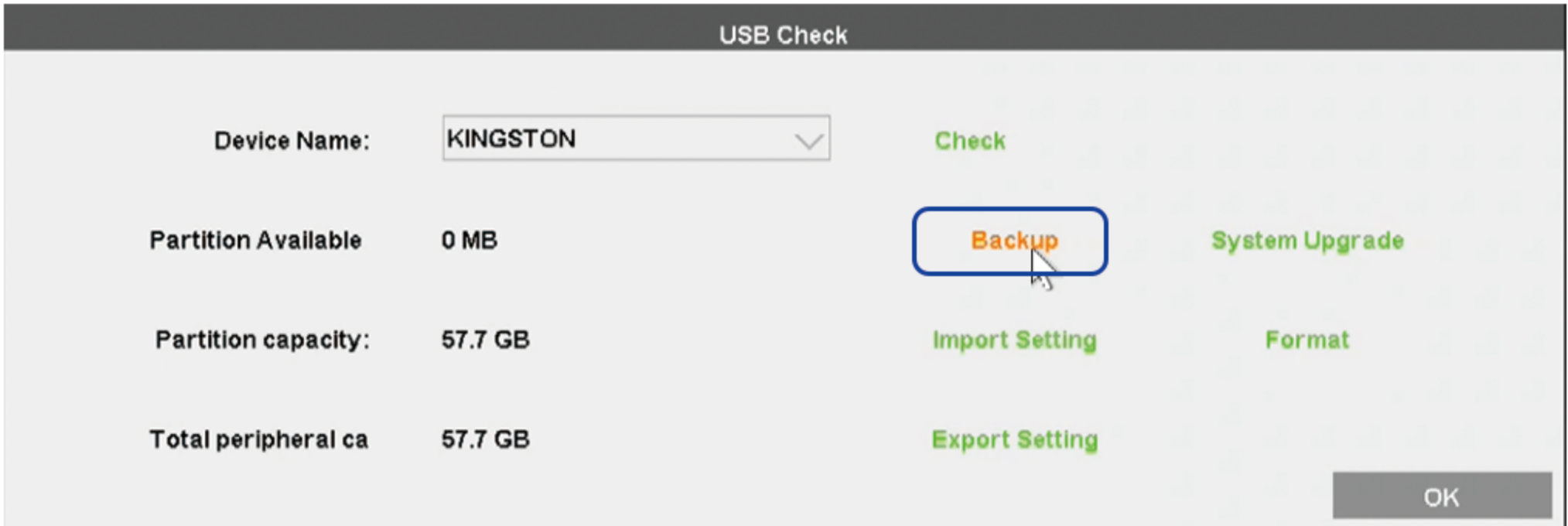
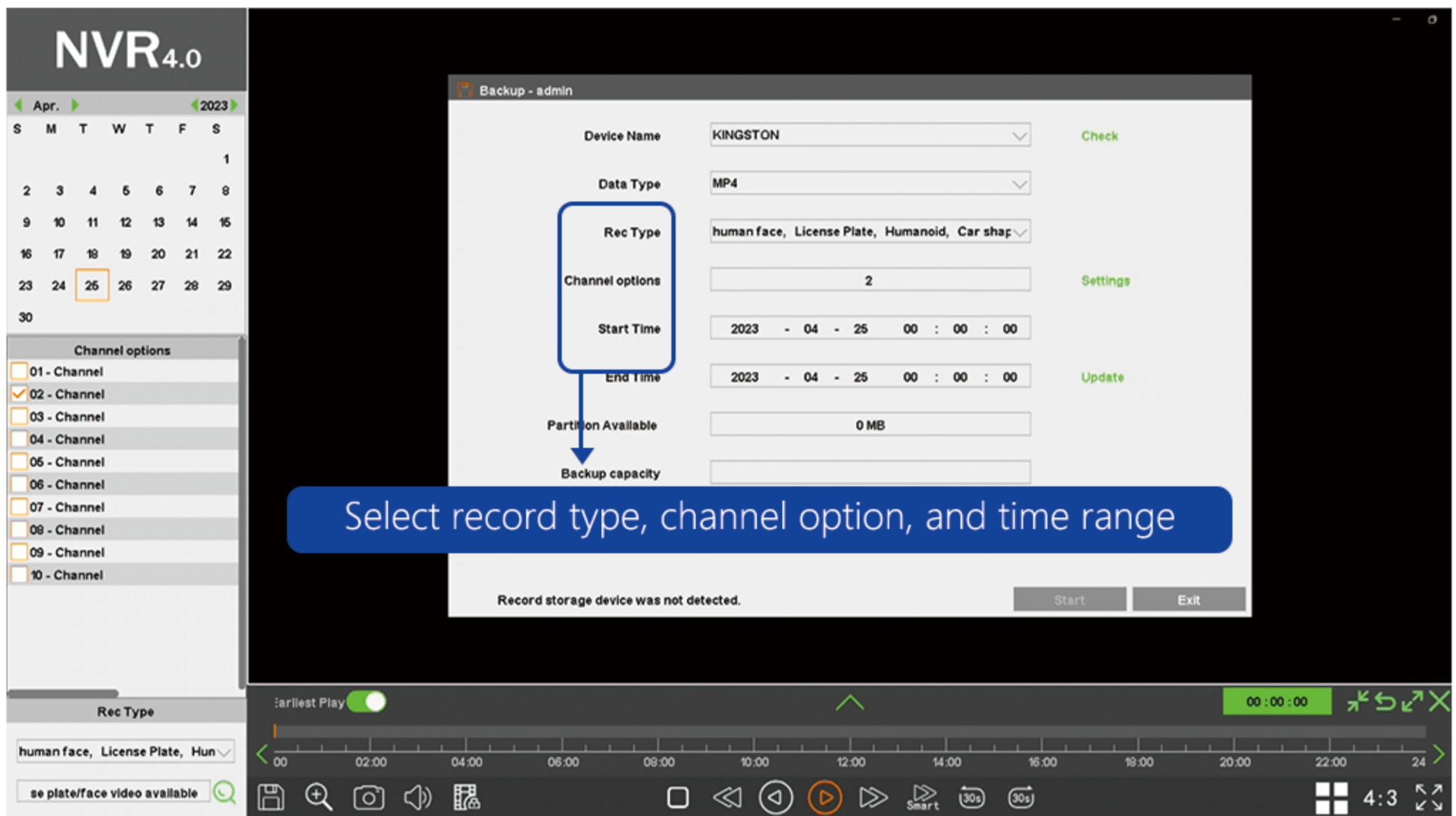


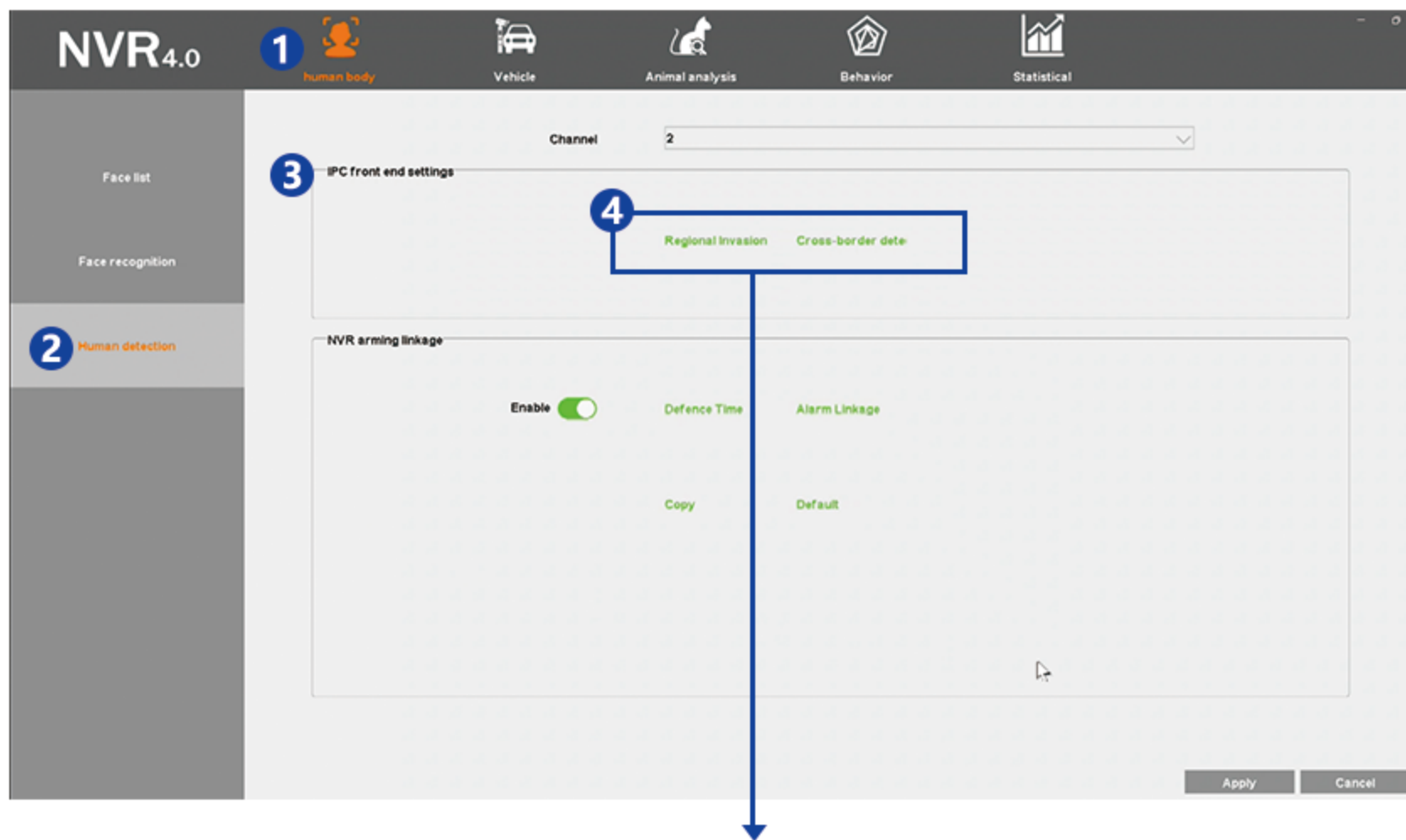
Figure 2.3.3 Backup Interface



## 2.4 Intelligent Analysis – human body detection/vehicle detection & license plate recognition

### 2.4.1 Regional invasion /Cross-border detection setting

Go to Menu →Intelligent Analysis →human body→ Human detection- Regional invasion and Cross-border detection.



regional invasion (square)/cross-border detection (line) setting

## Chapter 3 Appendix

### 3.1 FAQs

#### 3.1.1 The default administrator account and password

The default administrator account: admin

password: 123456

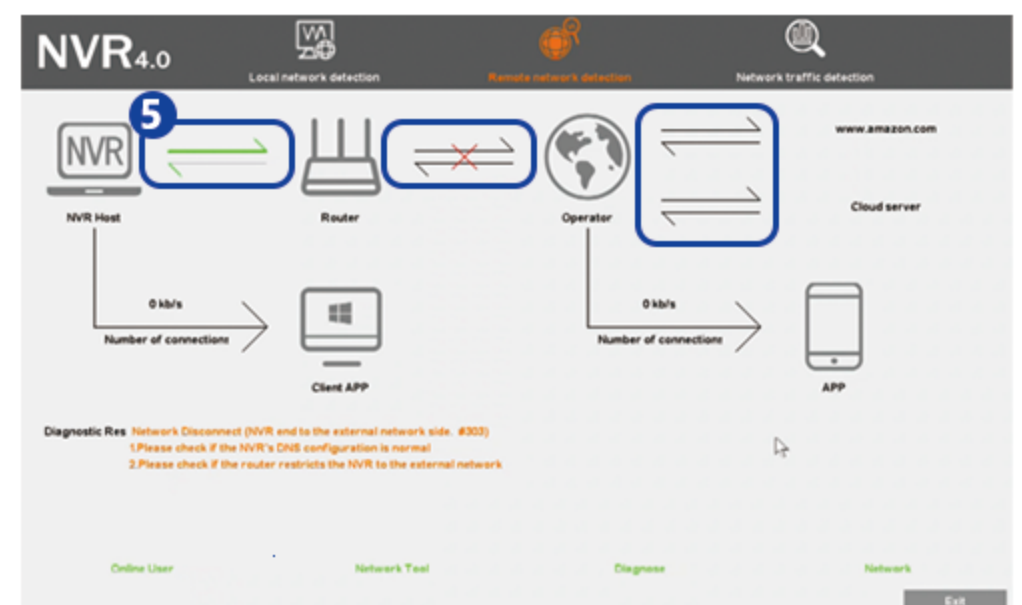
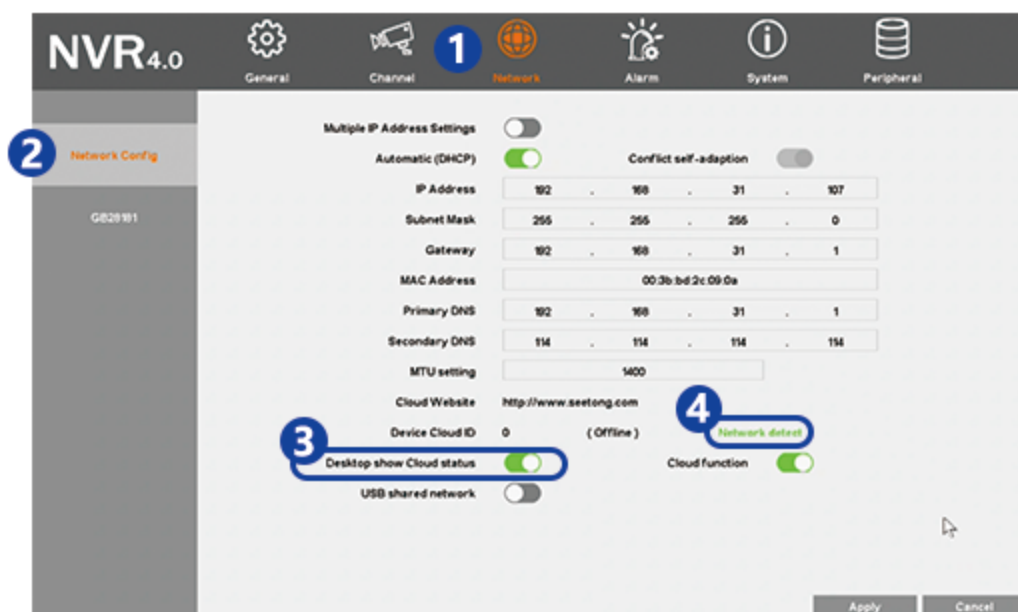
### 3.1.2 If user forgot the password

- 1.Go to **Menu → IP Camera → Forgot password**.,it will pop up a QR code.
- 2.Use **Seetong APP** to scan the QR code to obtain the temporary password.
- 3.Input the temporary password and reset the password of NVR. (The temporary password is only valid within one hour)



### 3.1.3 NVR online status

- 1.Go to **Menu→ Setting→ Network→ Network Config** to check the current IP setting and the connection.
- 2.Click **“Network detection”** to run the diagnosis of the connection among NVR, router, operator, and server. (A cross will show up in the corresponding route when malfunction occurs)



### 3.1.4 Unable to show the video

1. Check if the NVR is powered on. User can check if the LED light, Ethernet port indicator is flashing, etc. It is recommended to use the power supply provided with the product.
2. Check if the resolution of the monitor is too low. The default output resolution of the NVR is 1920X1080. If the maximum resolution of the monitor is lower than this, there will be no video output. User can press and hold the right mouse button to switch to the NVR's lowest output resolution to be 1024X768.
3. Disconnect all devices and power on again to check if there is video output. (The device supports output of both VGA and HDMI transmission.)

### 3.1.5 The NVR interface shows "No hard disk drive" after booting up

1. Please make sure that the hard disk drive is in good condition and it is connected to the NVR properly.
2. Please make sure that the power supply used is corrected and properly. It is recommended to use the standard power supply.
3. Please make sure that the hard disk drive connector and SATA connector are functioning normally.

### 3.1.6 Stuck, not smooth, disconnected happen after IPCs connected to NVR

To make sure stable and smooth transmission, when the quantity of IPCs connected to NVR is more than 16, it is recommended to use a Gigabit network switch.